

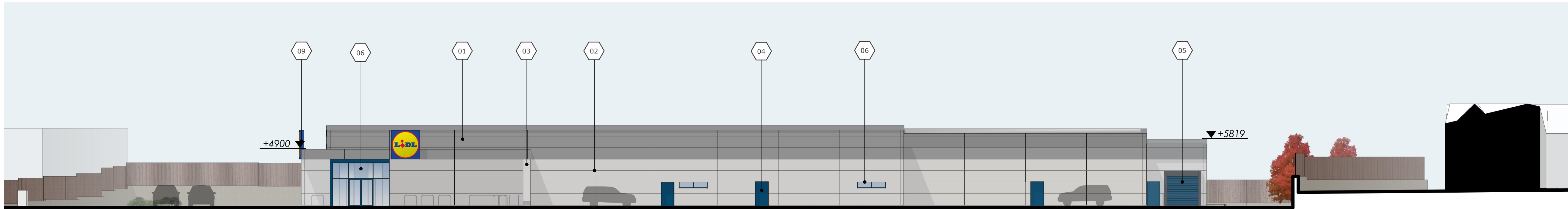
Future Development
NORTH ELEVATION

KEY

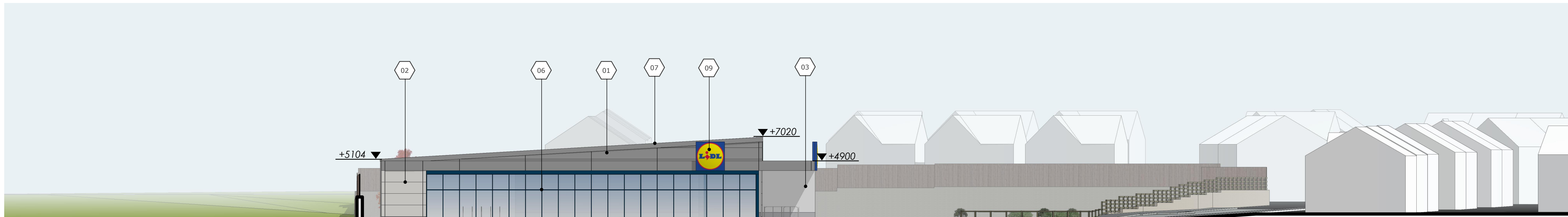
- 01 - Aluminium composite cladding panel
Colour: Silver (RAL 9006)
- 02 - Aluminium composite cladding panel
Colour: White (RAL 9010)
- 03 - Rendered plinth
Colour: Grey (RAL 9006)
- 04 - PPC Steel Door
Colour: Gentian Blue (RAL 5010)
- 05 - Servicing dockshelter
Colour: Dark grey (RAL 7024)
- 06 - Aluminium framed glazing system
Colour: Gentian Blue (RAL 5010)
- 07 - PPC Aluminium Trim
Colour: Silver (RAL 9006)
- 08 - PPC Aluminium Canopy
Colour: Dark grey (RAL 9006)
- 09 - Internally illuminated sign
- 10 - Photovoltaic panels

Signage shown is indicative and will be sought through a separate advertisement application.

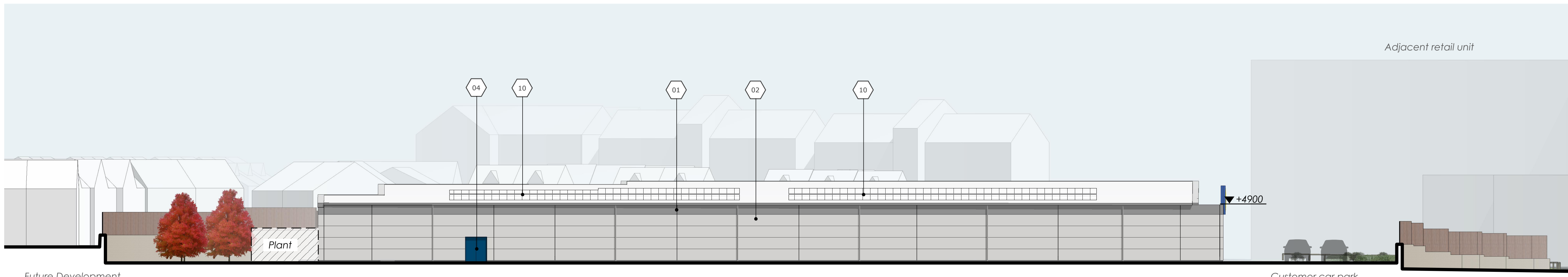
© Whittam Cox Architects - Disclaimer:
This drawing is copyright of WCCG Group Ltd trading as Whittam Cox Architects, and shall not be reproduced nor used for any other purpose without the written permission of the Architects. This drawing must be read in conjunction with all other related drawings and documentation. It is the contractors responsibility to ensure full compliance with the Building Regulations. Do not scale from this drawing, use figured dimensions only. It is the contractors responsibility to check and verify all dimensions on site. Any discrepancies to be reported immediately. IF IN DOUBT ASK.
Materials not in conformity with relevant British or European Standards/Codes of practice or materials known to be deleterious to health & safety must not be used or specified on this project.



EAST ELEVATION



Allotment
SOUTH ELEVATION



Future Development
WEST ELEVATION

14/07/2021	Revised scheme - final	WCCG
14/07/2021	Revised scheme - final	WCCG
CLIENT		
Lidl Great Britain Limited		

PROJECT
Holyhead Road
Coventry

TITLE
Proposed Elevations

DRAWING STATUS		
Planning		
DRAWN	JD	CHECKED WF
SCALE	1:200 @ A1	
DATE	August 2020	

Whittam Cox ARCHITECTS
whittamcox.com

Chesterfield / 01246 260261
London / 020 3388 0019
Leeds / 01134 682450

JOB NO.	DRAWING NO.	REV
140004	PL-06	A