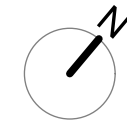
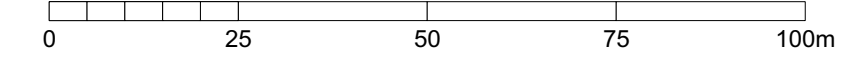


NOTES
 This drawing is the property of FPCR Environment and Design Ltd and is issued on the condition it is not reproduced, retained or disclosed to any unauthorised person, either wholly or in part without written consent of FPCR Environment and Design Ltd.
 Ordnance Survey base mapping - supplied by client.



- KEY**
- Proposed trees
 - Proposed shrub/perennial beds
 - Retaining wall
(Please refer to Whittam/Cox Architects 140004 SK-04 rev L Proposed Site Plan)
 - Bark mulch

NOTES:

TREES

- All trees to be planted in tree pits @ 1000mm x 1000mm x 750mm or at suitable size to accommodate root/container size.
- All trees to be back filled with top soil and suitable organic material (to be specified). - All trees should be staked or double staked using pointed softwood / peeled chestnut / larch or oak stakes, free from projections and large or edge knots and tied above ground.
- All trees in shrub beds located within 3m of any services to have their roots directed downwards by the installation of Reroot 600 or Reroot 1000 dependant on ground conditions and service locations.
- Suitable rabbit guards, fencing, or shelters will be used to protect plants from damage until established. Tree guards will be removed once the planting is established.

PLANTING

- All shrubs to be planted in pits 150mm wider and deeper than their root ball.
- Ornamental planting to be spaced as indicated on the planting schedule with taller plants to the centre or rear of beds and lower plants at the front.
- All planting to be planted in species groups of 5-10 species.
- Pits to be back filled with topsoil and slow release fertiliser at an appropriate rate.
- All planted areas are to be mulched.
- Geotextile membrane with minimum 200mm overlap and holes cut for planting between the topsoil and bark mulch. Sufficient pegs installed to prevent membrane from lifting.
- All shrubs to be well watered in at the time of planting and during dry spells.
- Shrubs to have suitable rabbit guards to protect plants from damage during establishment.

INITIAL 12 MONTH MAINTENANCE

- Regular maintenance visits shall be undertaken following planting to maintain all areas in a weed and litter free condition and to ensure the healthy establishment of all planting stock.
- For the first 12 months following practical completion the maintenance is the responsibility of the landscape contractor who undertook the implementation. Any failures to be replaced during the next planting season.
- During the maintenance period all areas of planting shall be watered, dependant on prevailing weather conditions, to ensure healthy establishment of all stock.
- All planting shall be maintained/inspected a minimum of 4 times annually to aid establishment and appearance.
- Maintenance operations shall include: All areas to be kept weed free by spot treatment with contact herbicide or hand weeding/ forked out, dead wood to be pruned out, pruning of epicormic growth or suckers from stems shall be removed without exposing live tissue, all prunings to be removed from site. Stakes and ties should be checked and adjusted accordingly to prevent growth restriction. Pruning of shrubs will be minimum, but maintain a neat tidy appearance any species which needs cutting back will only be done at the correct time of year in line with good horticultural practice. Footpaths will be kept obstruction and waste free.
- On completion of the 12 month maintenance period a site inspection shall be undertaken by the landscape contractor, landscape architect/ client and a representative of the appointed management company as necessary, to ascertain that all areas of landscaping associated with the development are in a satisfactory condition for handover to the management company. Any necessary works shall then be carried out to the satisfaction of the landscape architect/ client to enable the works to be handed over to the appointed management company or Local Authority as appropriate.

ONGOING MAINTENANCE AND MANAGEMENT

- The appointed management company should continue to undertake all necessary operations in line with the above notes, to ensure that the grounds are maintained in a neat and tidy appearance in line with good horticultural practice.
- Long term management of all communal areas of soft landscape shall be based on the above notes, however these notes are not definitive and any other works required to maintain the areas in a healthy condition should be carried out on a regular basis throughout subsequent years.

C	22/02/2021	Redline boundary removed	OFD
B	19/02/2021	Updated layout	OFD
A	05/08/2020	Updated tree size and near planting	IAM/SL
-	05.08.2020	Draft Issue	IAM / SLS
rev	/ date	/ description	/ drn / chkd

masterplanning •
 environmental assessment •
 landscape design •
 urban design • FPCR Environment and Design Ltd
 ecology • Lockington Hall
 architecture • Lockington
 arboriculture • Derby DE74 2RH

t: 01509 672772
 f: 01509 674565
 e: mail@fpcr.co.uk
 w: www.fpcr.co.uk

client
Lidl GmbH
 project
**Holyhead Road
 Coventry**

drawing title
Detailed Softworks Plan

scale
 1:200 @ A1

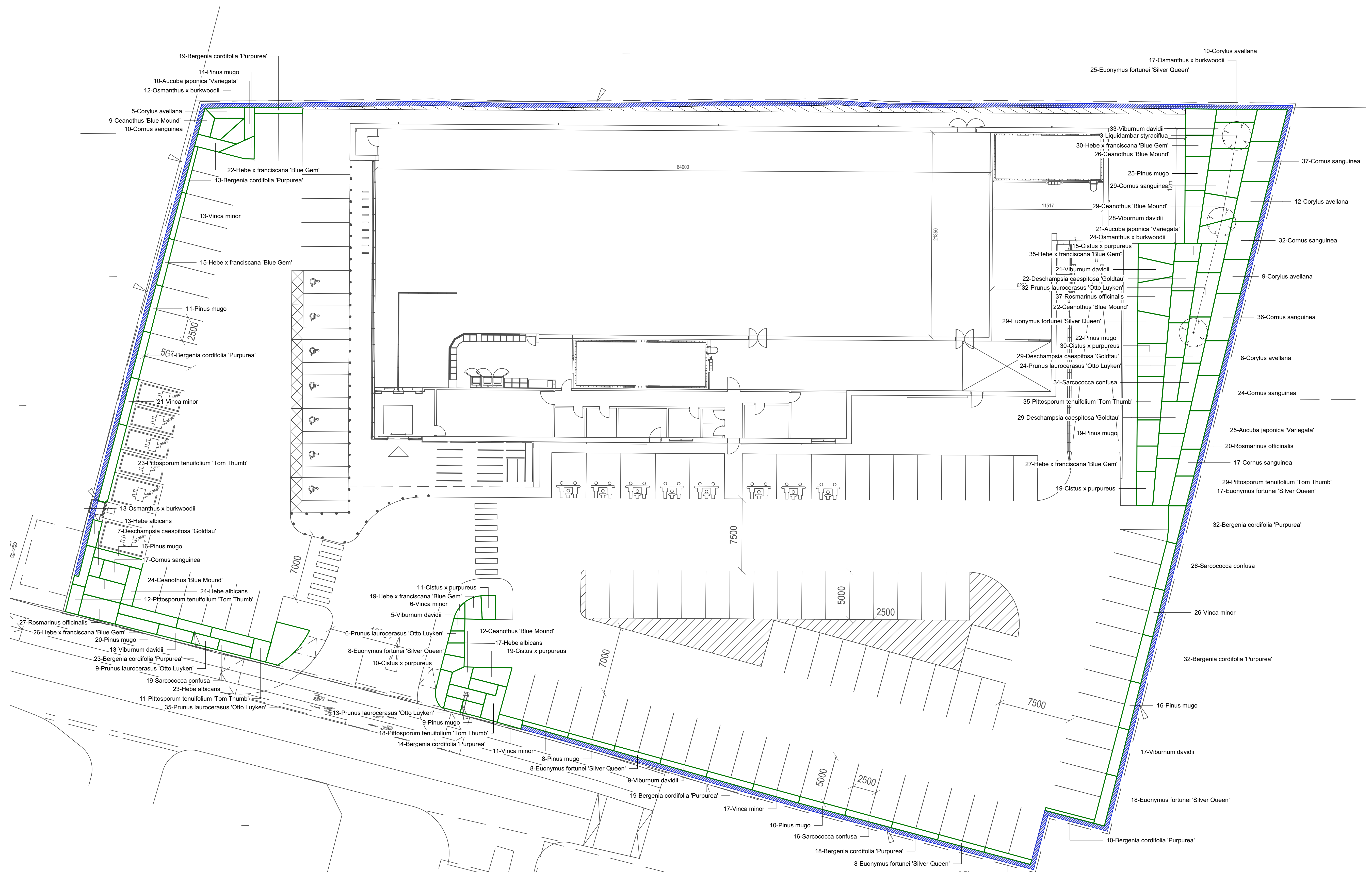
drawn / checked
 IAM / SLS

revision date
 22 February 2021

drawing number
9625-L-01

rev
C

File: K:\9600\9625\LANDS\Plans\9625-L-01C Detailed Softworks Plan.vwx



Planting Schedule							
Shrubs							
Qty	Latin Name	Common Name	Height	Scheduled Size	Rate/Spacing		
56	Aucuba japonica 'Variegata'		40-60cm	5L	3 Plants/sq m		
204	Bergenia cordifolia 'Purpurea'	Elephant's Ears	20-30cm	2L	6 Plants/sq m		
122	Ceanothus 'Blue Mound'	Californian lilac	40-60cm	5L	3 Plants/sq m		
104	Cistus x purpureus	Purple-flowered rock rose	30-40 cm	5L	3 Plants/sq m		
202	Cornus sanguinea	Common dogwood	60-80cm	BR/C3L	3 Plants/sq m		
44	Corylus avellana	Hazel, Cobnut	60-80cm	BR/C3L	1 Plants/sq m		
87	Deschampsia caespitosa 'Goldtau'	Tufted hairgrass or fairy wand	30-40cm	3L	3 Plants/sq m		
113	Euonymus fortunei 'Silver Queen'	Spindle Silver Queen	30-40cm	5L	3 Plants/sq m		
77	Hebe albicans	White hebe	30-40cm (D)	5L	5 Plants/sq m		
174	Hebe x franciscana 'Blue Gem'	Hebe 'Blue Gem'	40-60cm	5L	5 Plants/sq m		
66	Osmanthus x burkwoodii	Burkwood osmanthus	30-40cm	3L	3 Plants/sq m		
178	Pinus mugo	Mountain pine	30-40cm	5L	3 Plants/sq m		
145	Pittosporum tenuifolium 'Tom Thumb'	New Zealand Pittosporum	40-60cm	5-7.5L	3 Plants/sq m		
119	Prunus laurocerasus 'Otto Luyken'	Cherry laurel var.	60-80cm	5L	3 Plants/sq m		
84	Rosmarinus officinalis	Rosmary	40-60cm	5L	3 Plants/sq m		
95	Sarcococca confusa	Christmas box	30-40cm	5L	5 Plants/sq m		
126	Viburnum davidii	David's viburnum	20-30cm	3L	3 Plants/sq m		
94	Vinca minor	Lesser periwinkle	30-40cm	3L	5 Plants/sq m		

Trees							
Qty	Latin Name	Common Name	Height	Form	Root Condition	Minimum Clear Stem	Girth
3	Liquidambar styraciflua	Sweet gum	300-350cm	Standard	RB	Min 200cm	10-12cm